

SPCC Revision 1

Section 2.0, Table 1:

- Remove from “Mobile Refuelers” the following trucks:
 - JR2
 - ST1
 - ST2
- Add to “Mobile Refuelers” the following truck:
 - JR7
 - Contents: Jet-A
 - Capacity: 3,000 gallons
 - Container: Steel
 - Secondary Containment: None
 - Flow Capacity: 300 gallons per minute

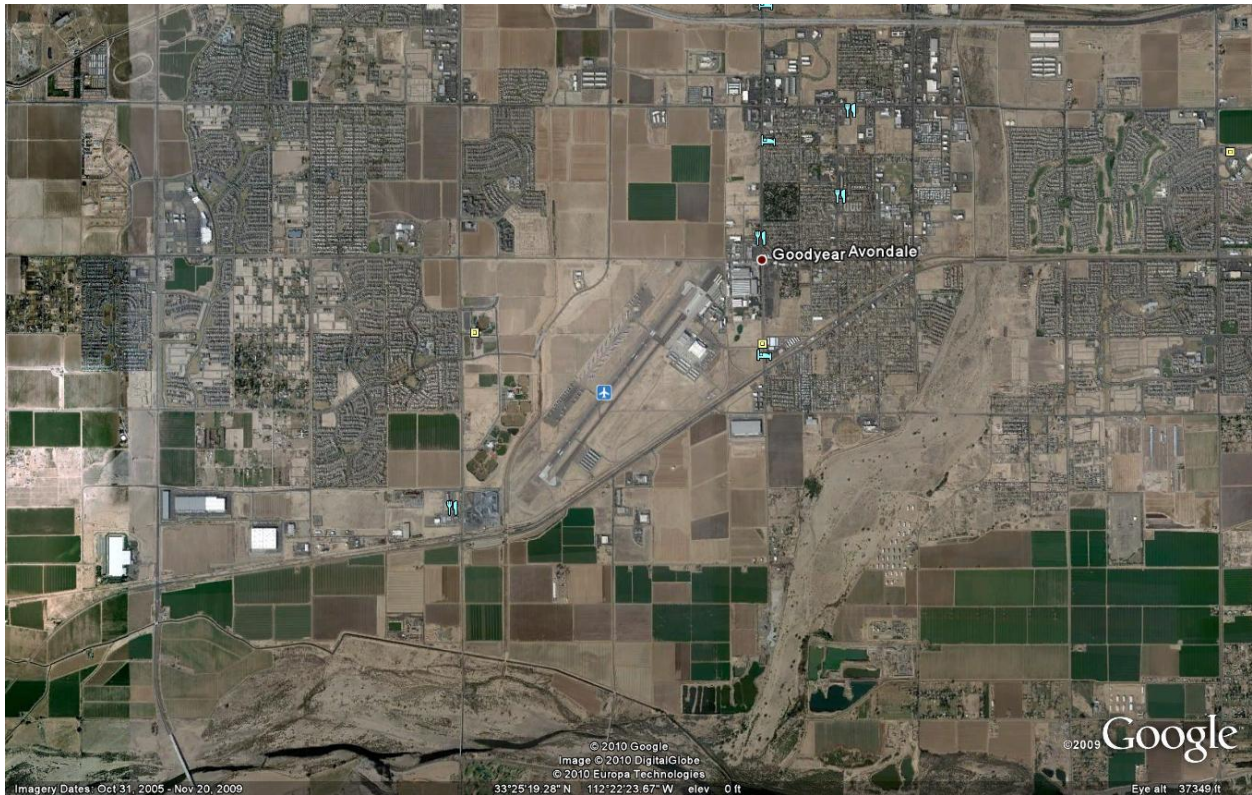
Section 2.5.7

Amend the sentence “For any containment water released to the ground, the inspection will be conducted and the amount of water removed will be reported to the FBO Manager prior to discharge” to read as follows:

- All standing water in the fuel farm containment area will be transferred to the oil-water separator located in the wash rack at the Alpha-2 taxiway exit/T-shade area.

Figure 1.

Replace the Site Location Map with the following Map.



Approval Signature:

Tim E. Berger, Managing Partner

Lux Air Jet Center – Goodyear

Executive Terminal

1658 South Litchfield Road

Goodyear, AZ 85338-1509